
Super POSS

Release 6.30
ICL ISS45 Client Install MEISolutions



03/28/02
Version 1.0

Super POSS 6.30 for Windows NT™ Based Systems



MEISolutions

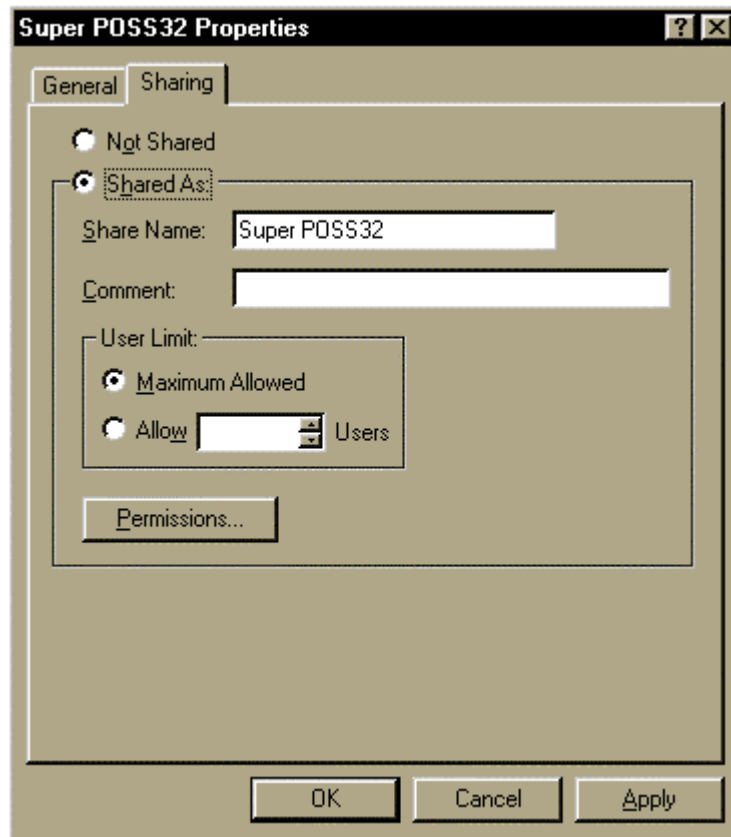
ICL ISS45 Client Installation Instructions

Before you begin...

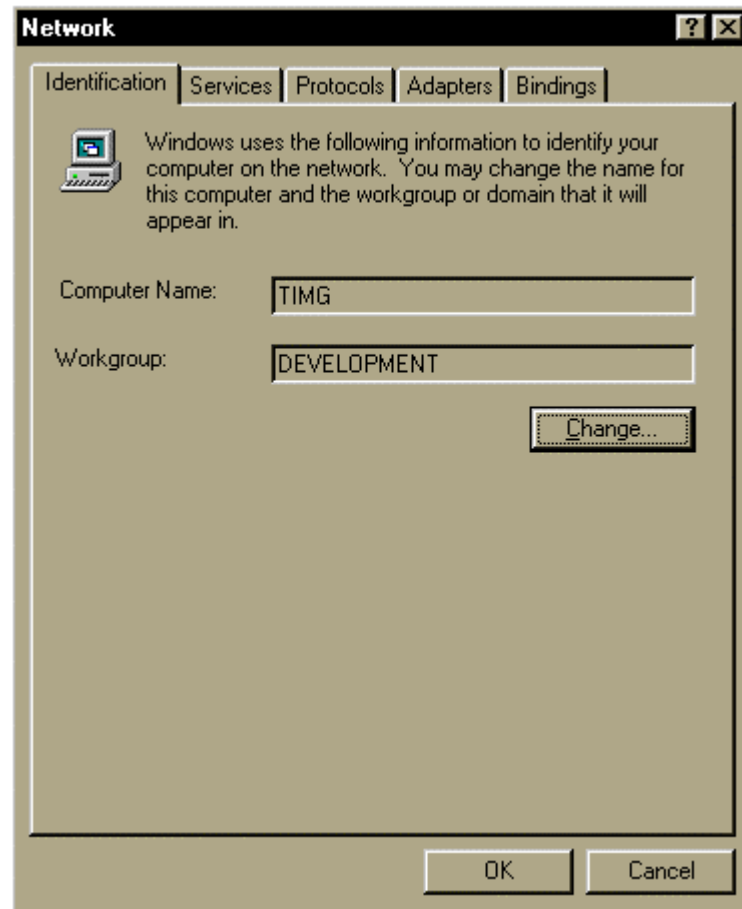
- ❑ **Make sure that your system meets all of the requirements necessary to run this version of Super POSS.**
- ❑ **Make sure that ICL PCMASTER is installed and operational on your selected workstation LFS3 – 10.**
- ❑ **Make sure that Super POSS is installed on the Server only.**
- ❑ **Make sure that you have a network connection between the Server and the Client.**
 - ➔ Note: See your System Administrator for installation.

Super POSS Client Installation (Server PC)

- ❑ **On the Server PC, share your Super POSS directory.**
 - Double-click on the My Computer icon.
 - Double click on the Program Files folder.
 - Right-click on the Super POSS32 folder and select Sharing.
 - Click on the Shared As tab and make sure that the Share Name is Super POSS32.
 - Set the User Limit to Maximum Allowed.



- Select the Permissions tab, and make sure that this is set to include all of the clients you wish to use and give them Full Access.
 - Click OK, and then the Apply button.
- **Find the Server's system name and IP address.**
- Click on the Start button and select Settings, and then Control Panel.
 - Double-click the Network icon, and under the Identification tab it will list the system name and workgroup name.
 - On Windows 2000 systems this information is obtained by clicking the **RIGHT** mouse button on the My Computer icon on your desktop.



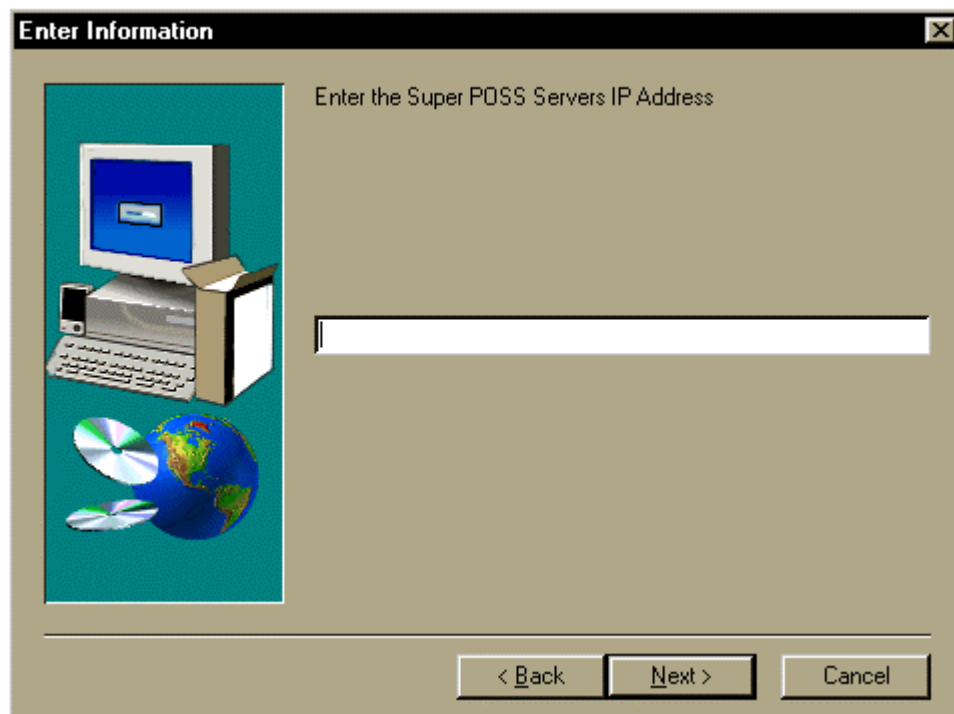
- Click the Cancel button and return to the desktop, and then click on the Start button again, and select Run.
- Now type “ping” and then the system name. The number displayed (Example: 127.0.0.1) is your **IP**

Super POSS Client Installation (*Client PC*)

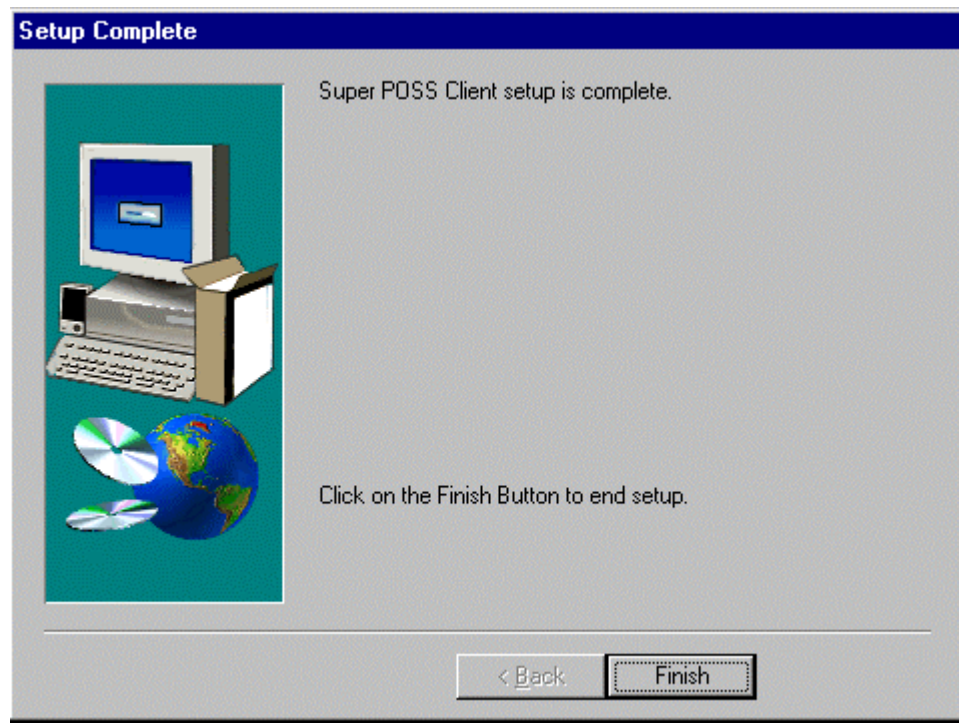
- ❑ **Map a drive from the Server to the Client PC.**
 - From the desktop, right-click on the Network Neighborhood icon and select Map Network Drive.
 - Under Shared Directories, double-click on the name of the Server PC, select the Super POSS32 folder, and then click OK.
- ❑ **Run Client Setup.**
 - Click on the My Computer icon, and open the mapped Super POSS32 drive.
 - Double-click on the Client Setup folder, and run the Setup program.



- When prompted, add the Server's **IP address** (This is the result of the "Ping" command).



- After you are finished, exit completely out of this drive.



□ **Run Super POSS from the Client PC.**

- From the Client PC's desktop, open the Super POSS32 Client folder that was just created from the installation and make sure that MEI Logger, MEI Command Prompt, and the Super POSS32 Login are all present before beginning.
- ➔ Note: If you have purchased the FM option from MEI, the FM Remote Maintenance icon should be present.
- Click on the Super POSS Login icon and log in as usual.

Document control number: 1506-002-010