
Super POSS

Release 6.30
Scanmaster Client Install MEISolutions



MEISolutions

2/26/99
Version 1.0

Super POSS 6.30 for Windows NT™ Systems



MEISolutions

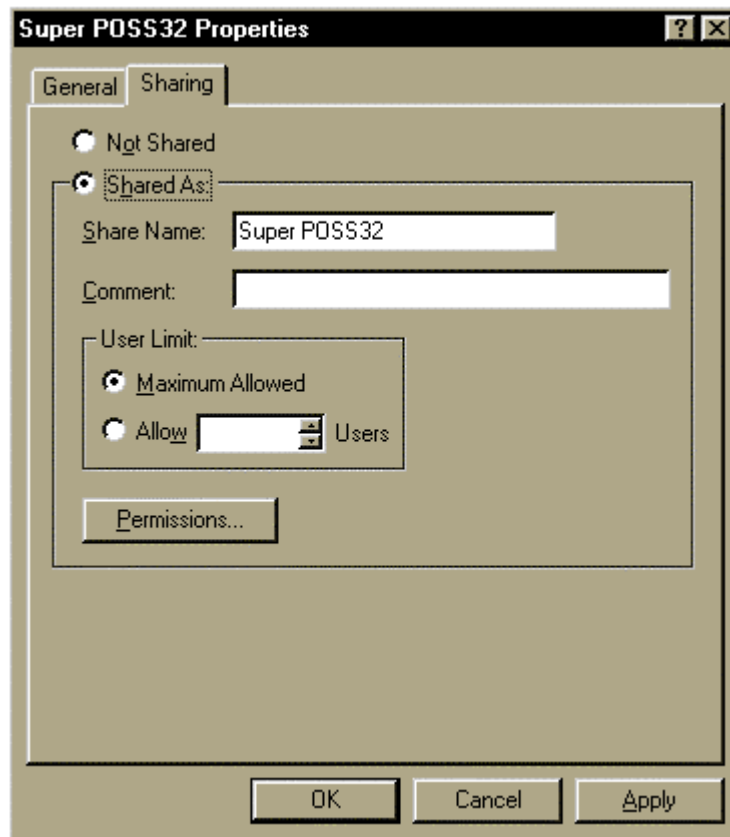
Scanmaster Client Installation Instructions

Before you begin...

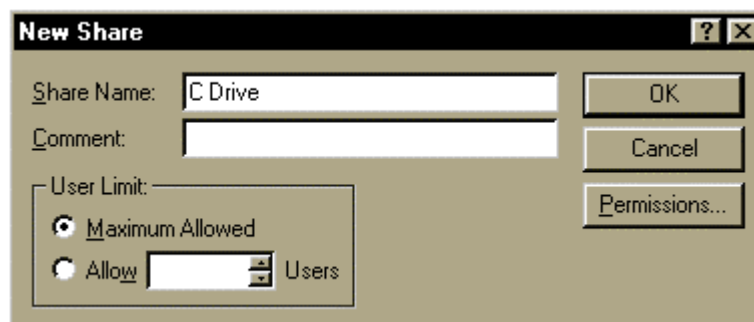
- ❑ **Make sure that your system meets all of the requirements necessary to run this version of Super POSS.**
- ❑ **Make sure that Scanmaster and Super POSS are installed on the Server only.**
- ❑ **Make sure that the Btrieve Microkernel Engine is installed on both the Client and Server.**
- ❑ **Make sure that you have a network connection between the Server and the Client.**
 - ➔ Note: See your System Administrator for installation.

Super POSS Client Installation (Server PC)

- ❑ **On the Server PC, share your Super POSS directory.**
 - Double-click on the My Computer icon.
 - Double click on the Program Files folder.
 - Right-click on the Super POSS32 folder and select Sharing.
 - Click on the Shared As tab and make sure that the Share Name is Super POSS32.
 - Set the User Limit to Maximum Allowed.



- Select the Permissions tab, and make sure that this is set to include all of the clients you wish to use and give them Full Access.
 - Click OK, and then the Apply button.
- **Share the Scanmaster folder.**
- Double-click on the My Computer icon on the desktop.
 - Right-click on the F Drive and select Sharing.
 - Click on the New Share button and change the Share Name to F Drive.

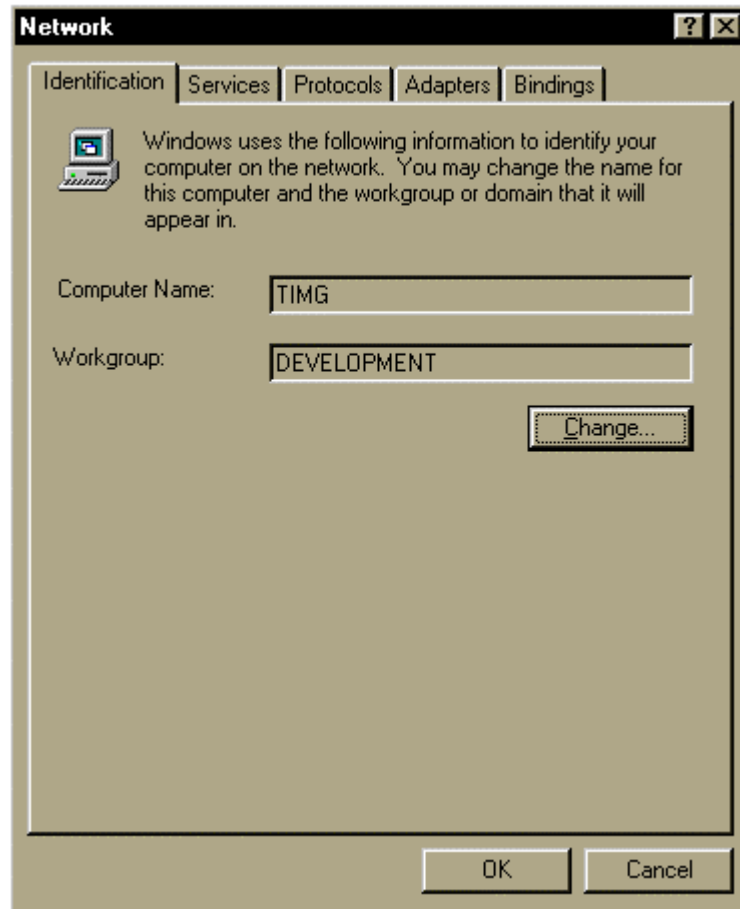


- Click the Permissions button and make sure that Full Control is given to each of the Clients that you will have set up.

Note: If you have any trouble with Sharing procedures, contact your Network Administrator.

□ **Find the Server's system name and IP address.**

- Click on the Start button and select Settings, and then Control Panel.
- Double-click the Network icon, and under the Identification tab it will list the system name and workgroup name.

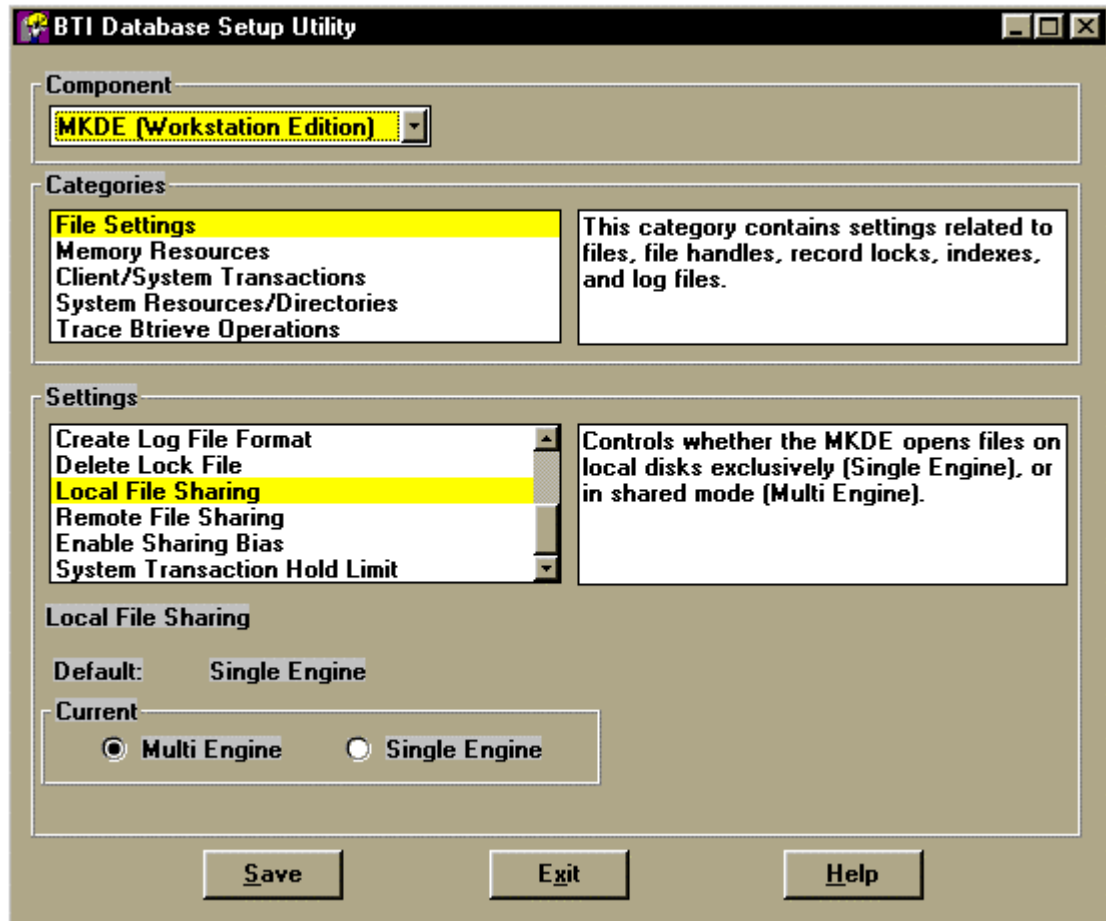


- Click the Cancel button and return to the desktop, and then click on the Start button again, and select Run.
- Now type “ping” and then the system name. The number displayed (Example: 127.0.0.1) is your **IP address**. Write the **IP address** down.

Note: You may want to ask your administrator for assistance in case you are unsure about the procedure.

□ **Set up the Microkernel Engine's options.**

- Click on the Btrieve Technologies Database folder in the Start Menu, and double-click on the Microkernel Setup icon.
- Make sure that the Component field is set to MKDE (Workstation Edition).
- Under Categories, click on File Settings.
- Under Settings, click on Local File Sharing and select the Multi Engine option.



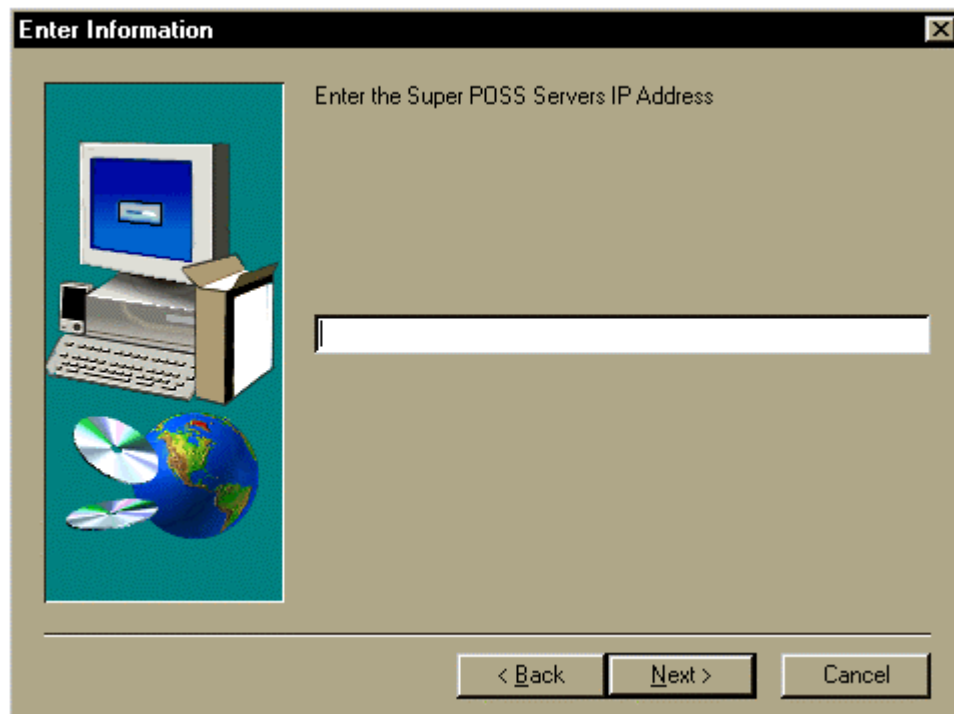
- Under Settings, click on Remote File Sharing and select the Multi Engine option.
- Click on the Save button to save your changes.

Super POSS Client Installation (*Client PC*)

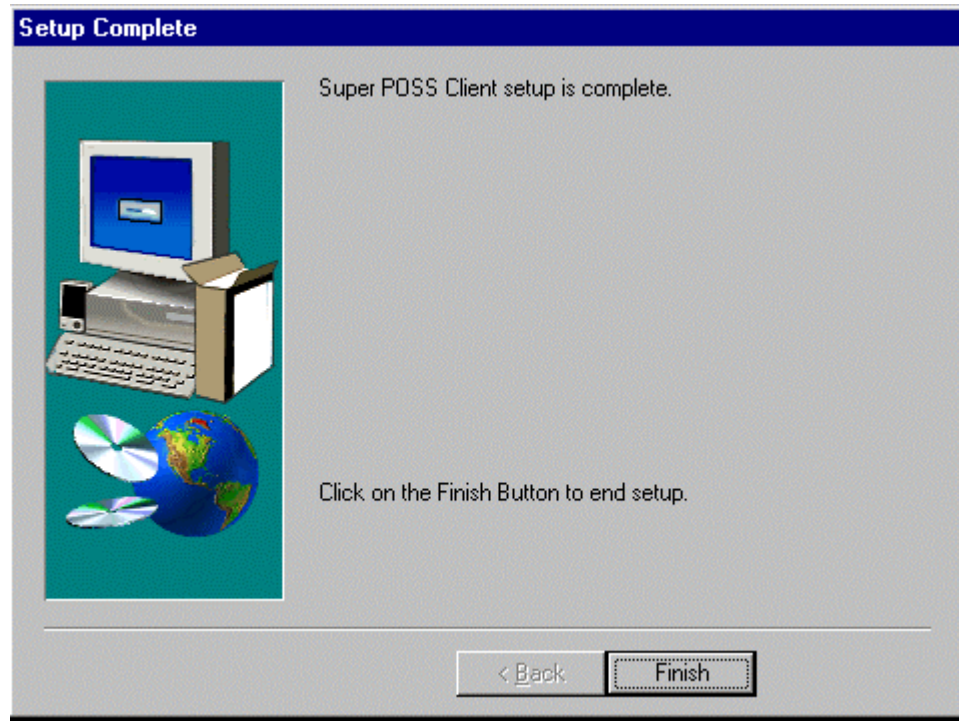
- ❑ **Map a drive from the Server to the Client PC.**
 - From the desktop, right-click on the Network Neighborhood icon and select Map Network Drive.
 - Under Shared Directories, double-click on the name of the Server PC, select the Super POSS32 folder, and then click OK.
- ❑ **Map a drive to the Scanmaster folder.**
 - From the desktop, right-click on the Network Neighborhood icon and select Map Network Drive.
 - Set the Drive to be F.
 - Under Shared Directories, double-click on the name of the Scanmaster PC, and then click OK.
- ❑ **Run Client Setup.**
 - Click on the My Computer icon, and open the mapped Super POSS32 drive.
 - Double-click on the Client Setup folder, and run the Setup program.



- When prompted, add the Server's **IP address** (This is the result of the "Ping" command).

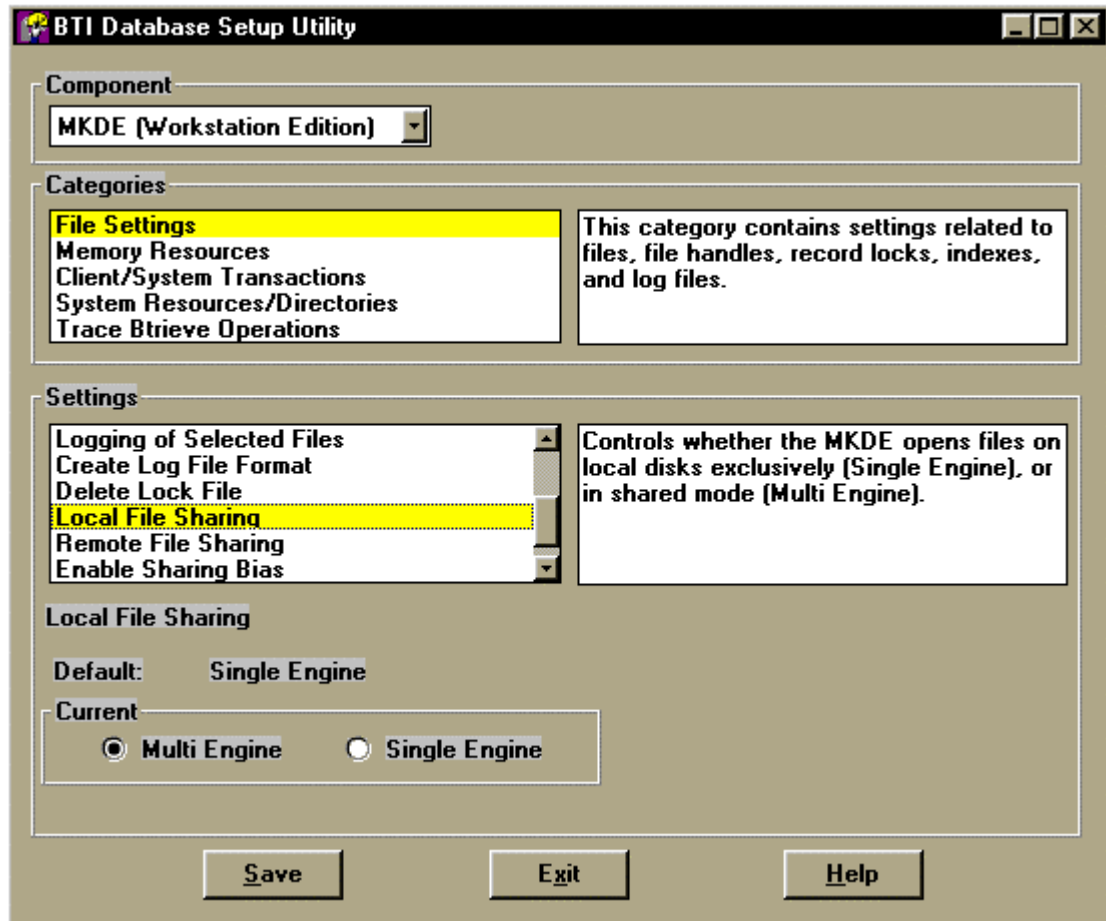


- After you are finished, exit completely out of this drive.



□ **Set up the Microkernel Engine's options.**

- Click on the Btrieve Technologies Database folder in the Start Menu, and double-click on the Microkernel Setup icon.
- Make sure that the Component field is set to MKDE (Workstation Edition).
- Under Categories, click on File Settings.
- Under Settings, click on Local File Sharing and select the Multi Engine option.



- Under Settings, click on Remote File Sharing, select the Multi Engine option, and click on the Save button.
- ❑ **Add the Microkernel Engine to the Start Menu.**
- Click on the Start button and select the Microkernel folder.
 - Right-click on the Microkernel Database Engine icon, and select Copy.
 - Exit out of the Microkernel folder, and double-click on the My Computer icon on your desktop.
 - Double-click on the C Drive icon to open it.
 - Double-click the WinNT folder to open it, then Profiles, then the All Users folder, then the Start Menu folder, the Programs icon. and then open the Startup icon.
 - Now click on Edit, and then Paste.
 - Exit out of all Windows applications and reboot your system for the changes to take effect
- ❑ **Run Super POSS from the Client PC.**
- From the Client PC's desktop, open the Super POSS32 Client folder that was just created from the installation and make sure that MEI Logger, MEI Command Prompt, and the Super POSS32 Login are all present before beginning.

Note: If you have purchased the FM option from MEI, the FM Remote Maintenance icon should be present.

- Click on the Super POSS Login icon and log in as usual.